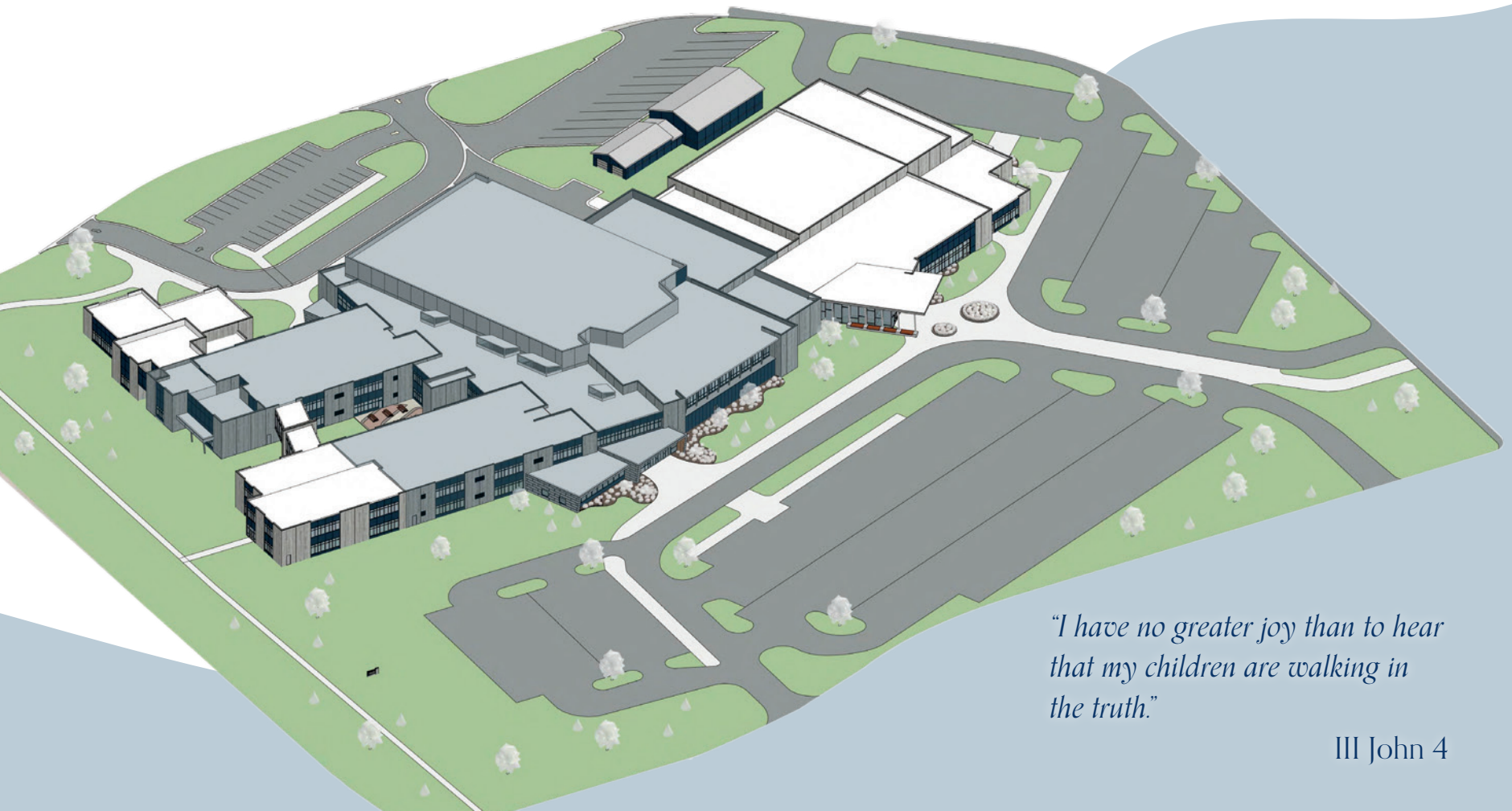


EXPANDING OUR MISSION



*"I have no greater joy than to hear
that my children are walking in
the truth."*

III John 4

Our Vision

Developing followers of Christ to be leaders.

Our Mission

Foster faith, increase knowledge, develop skills to serve God and others.

Our Motto

Educational Excellence in a Christian Community

Our Beliefs

- We believe God is Creator, Savior, and Lord.
- We believe the Bible is God's Infallible Word and is the full Gospel of Creation-Fall-Redemption-Restoration.
- We believe our children belong to God and are instructed to know Jesus as Lord and Savior, to enjoy Him, and to love Him and others.
- We believe a Christian world view will benefit a person in this life and in eternity and seeks to restore the Kingdom of God on earth.

EXPANDING OUR MISSION

In 2015, Unity was blessed by the Unity community who faithfully and generously provided gifts, prayers, time, talent, and finances to build our new facility on 48th Avenue. We are grateful to each and every person, company and organization that supported this effort.

We thank God for His guidance, care, and generous provision as He answered our prayers with successful completion of our facility, and allowing for our school to be completely debt free by 2018.

For 70 years, Unity Christian High School has expanded it's mission of fostering faith, increasing

knowledge, and developing skills for students to serve God and others.

In the current 2022/23 school year, 663 students in grades 9-12 are taught by a faculty of 49. They are taught from the perspective of the school's core beliefs that God is Creator, Redeemer and Lord over all; that the Bible is God's infallible Word; that God is a vital part of every aspect of life; and, that we all need to be taught how best to know and serve God in all areas of life. Unity students come from six Eastern Ottawa County Christian elementary schools, in addition to many Christian schools outside the EOCS.

EXPANDING OUR MISSION

– Our History

When it was determined to move from Oak Street in 1999, the community overwhelmingly supported building a new facility to replace a building that first opened in 1953. During the time on Oak Street the facility experienced six significant expansions, but the final decision was to replace a tired and outdated facility. Unity had purchased the 80 acres of the Bremer farm located on 48th Avenue, which was an ideal site to plant the new Unity Christian. The project used a phased approach as there were many needs facing Unity, and developing this land would take time.



1953 - The original campus on Oak St. in Hudsonville, consisting of six classrooms, a library, office, heating room, and bathrooms.



1981 - A gymnasium/classroom addition was added to the original campus on Oak St.



1999 - Unity Christian Association members voted overwhelmingly to pursue plans to build an athletic complex on an 80-acre site on 48th Ave., with the intention of eventually voting again to relocate the high school to that site.

The first phase of this expansion was to develop and prepare the 80 acres, which included:

- Developing the site (excavation of 80 acres, sanitary and storm sewers, electric, water)
- Building parking lots, roads, athletic team buildings, restrooms, and storage buildings
- Building athletic facilities for tennis, baseball, softball, soccer, track, and practice fields
- Building a stadium with seating for 750 with a press box to host track, soccer, and lower-level football (varsity home football games are held at Hudsonville and Jenison High School stadiums)

Unity began using this facility in the fall of 2002 with girls' tennis.

The football and soccer fields were first used in the fall of 2003. Use of the baseball fields, softball fields, and track began in the spring of 2004.

In the fall of 2004, Phase II commenced. Fundraising and plans began immediately with the goal of building a new school. As the design and development phase of this project were being prepared, the estimated cost for construction came in at \$28.5 million. With the community's support it was decided to keep moving forward. Fundraising continued for several years as the board desired to have all the funding in hand prior to putting a shovel in the dirt. Though there was great commitment from the Unity community, the economic conditions began trending downward a few years later. As

the economy slowed, fundraising became increasingly challenging. The funds needed to build this new facility were at a standstill and a decision needed to be made. In 2008, Unity's Board of Trustees determined it was best to suspend all fundraising for the development of a new facility as those in our community were experiencing the impacts from a negative economy. The project was put on hold.

In 2012, the Board of Trustees knew decisions regarding building a new academic facility were paramount as the Oak Street facility was getting older, more tired, and major utilities needed to be upgraded. Working with the architect firm GMB, the original plans for the new facility were examined and the costs that were estimated in 2004 of \$28.5

million were now at \$34 million. The Trustees were challenged by our community to review all aspects of this project and come up with a plan and cost structure of which our community could support. A task force was charged with reviewing past plans and produced an option where the square footage was reduced, and parts of previous plans removed with the idea the building could be easily expanded when needed. This decision is the current reality we live in on 48th Avenue. The high school covers 149,000 sq ft with a final cost of \$23 million (\$900,000 of which was set aside in an operational trust). This building is allowing our staff to carry out our mission to foster faith, increase knowledge, and develop skills so students can serve God and others!



2003 - Phase I of the Building Unity Project was completed. This included the purchasing of land on 48th Avenue, the new athletic complex, and infrastructure preparation for the new school building.



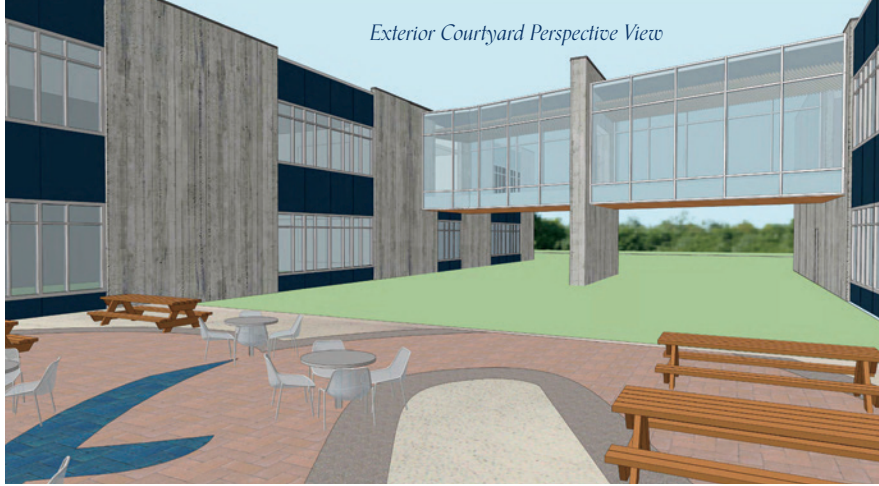
2004 - Phase 2 of the Building Unity Project started. By 2007, the school's main parking lot was completed, and by 2008 fundraising was put on hold.



2012 - Phase 3 of the Building Unity Project was the final push to raise the remaining amount. Unity purchased an additional 30 acres to the south. In 2014, we had our Ground Breaking Ceremony. It was completed by AUGUST 2015.

EXPANDING OUR MISSION

LATE SPRING 2023 - Sequence I of Expanding our Mission Campaign will begin.



Challenges and Solutions

As we continue working to carry out our mission, Unity also faces significant challenges. These challenges require creative and bold responses.

Challenge One:

The Eastern Ottawa Christian schools are growing – praise God! Along with this, Ottawa County has been the fastest growing county in the state of Michigan in the past ten years. (Unity serves approximately 10% of Ottawa County residents.) Preparing for the predicted increasing number of students who will attend Unity, the challenge of needing more space and supporting growing programs is eminent. While the current facility is up to date and functioning as designed, we must

expand to address our needs. Additional classrooms in the areas of Science, CAD/Engineering, Industrial Arts, Fine Arts, Physical Education, as well as additional locker rooms, bathrooms, and common spaces are needed for students to exist in community. As enrollment in Christian education grows and student population expands, the recently built facility must expand to meet these realities.

Challenge Two:

As the school's programs have increased to better equip our students for a changing contemporary society, students today are spending an increasing amount of time in school. Our doors open daily at 6:15 a.m., and many times the last activity of the day ends past 9:00 p.m. The school is where students exist in

community, and programs are supporting the development of our young people to be leaders in our society. More classrooms and dedicated areas for student gatherings outside of the classroom are needed to meet our goals. Increased programming is a driving force in expanding our current campus. This expansion will address areas of congestion that exist in our building during break, lunch, and after school, as well as during numerous community functions which take place on Unity's campus.

Challenge Three:

A program with significant need for space is Fine Arts. Long have been the discussions to build a Unity Christian auditorium. That is a wonderful goal, but the realities of building a single use facility with an estimated cost approaching \$25 million has not gained momentum within the Unity community at large. The Unity community has repeatedly supported creating facilities with multiple facets of use. Our current multi-purpose gymnasium is a great example as it holds chapel, physical education, student activities, athletic practices/events, fine arts practices/events, dinners, graduations, and a myriad of other activities.

Currently, area auditoriums and churches are used to host Unity's Fine Arts performances. It is becoming increasingly difficult, and at times impossible, to rent auditoriums and churches on a schedule and timeline that aligns with high school. Our co-curricular programs are at the mercy and convenience of others. The proposed plan addresses this challenge by creating a dramatical/musical fine arts stage. This stage would be equipped to hold large group bands, orchestras, and choirs with the necessary acoustics for performances. While assisting the Fine Arts programs, the design would also support physical education classes held in the gym during the day. By separating the stage and the gym with soundproof folding walls the ability to hold physical education classes, athletic practices and musical practices concurrently would be a reality. This creative design could allow for the ability to host a greater number of performances and community events at school.

While this new space is not an auditorium, the possibilities that exist in usage will impact a far greater number of students as we seek to be resourceful, responsible, and realistic.

EXPANDING OUR MISSION[™]

– Our Future

Following many interactions within the community explaining the expansion, tremendous support and financial commitments have been received. Funds raised are at \$8.5 million. All are called to become involved and we are preparing to engage our community to expand our mission!

The economic conditions today are much different than we faced in 2015. The cost of materials has increased significantly, supply chain issues are real challenges, and timely building due to a reduced work force are all realities this project faces. Unity's Trustees have created a project that will occur in several

sequences. This sequencing will allow fundraising to match the progression of a building timeline along with avoiding interruptions to the daily student schedule at school.

In developing the overall plan, the Trustees prayerfully considered how we can best educate our students moving forward. In summary, the Trustees believe this plan:

- meets immediate needs that support increasing enrollment
- provides space for thriving programs
- provides flexibility in the functionality of this expansion
- provides a sequencing project matching timeline of construction to community funding

Excellence in education is necessary to help our students, God's children, provide Christian leadership in a society needing direction. As parents and a community of faith, we must equip our students with the knowledge and skills to be Christ-like servants who demonstrate Christian principles and behavior throughout their lives. Our students have been, and continue to be, in demand in the job market, in churches, and in society because of their reputation for being knowledgeable, loyal, honest, ethical, and having a strong work ethic. Unity graduates have gone into the world with a high sense of values and a passion to serve - they have an impact advancing God's kingdom throughout the world!

Great things are happening now in our current facility at Unity Christian! However, in order to prepare for immediate and future growth, and to continue meeting the greater needs for student development, the proposed plans must be completed.

With God's leading and with your help, Unity's plans will become a reality – fostering faith, increasing knowledge, and developing skills for students to serve God and others.



Jerry DeGroot
Principal/CEO





*“May the favor of the Lord
our God rest on us;
establish the work of our
hands for us—
yes, establish the work of
our hands.”*

Psalm 90:17

EXPANDING OUR MISSION — Through Educational Excellence

Unity Christian is a place where Christian faith is combined with educational excellence. We strive to provide an excellent education developing followers of Jesus to be leaders. To achieve this goal, a comprehensive curriculum prepares students for where God calls them after high school – whether that be the mission field, work, or college. Additionally, passionate Christian teachers infuse our comprehensive curriculum with Biblical truths,

share personal faith, and cultivate strong student-teacher relationships. This is a deep calling that all of us at Unity feel each and every day.

To answer that calling, we need facilities that enable and enhance our ability to meet the needs of each student. Additional classrooms are needed for an increasing student enrollment. Additional space for Educational Support Services is needed to meet the needs of students that require extra support. Additional space for Shop is needed for an increased student desire for Industrial

Arts courses. Additional STEM classrooms are needed for Science and Robotics. *It's a lot.* But the calling is *deep* and the kingdom impact is *essential* for the restorative work God calls all our students to.

May the favor of the Lord our God rest on us and establish the work of our hands!!

Bill Postma
Bill Postma
Director of Instruction

EXPANDING OUR MISSION

– Through Infusing Faith in the Lives of Our Students

Our mission at Unity, to foster the faith development of students, allows each student to discover how every aspect of their life is viewed through the lens of Scripture.

Choosing a faith-infused worldview means glorifying God through a life of gratitude,

submitting every part of life to His will, while extending God's grace to the community. Christianity is not "what" a faith-infused student is, instead it is "who" they are.

Much like a watercolor permanently changes the paper on which it is applied, the infusion of faith into the life of a student allows them to fully embrace their identity as God's child. It prepares them to engage the world through the only lens of truth, God's Holy Word.

Every aspect of a Unity education is intentionally structured, giving each student the opportunity to encounter Jesus daily. And, along with the work of the Holy Spirit, leading students toward a faith-infused, lifetime commitment of service in all areas of life.



Dan Landstra
Director for Spiritual Leadership



Proposed First Floor Plan

Science Classroom - Sequence I

Experiencing God through a greater understanding of His creation is a defining trait of the Christian school science classroom. Increasing space committed to the study of science and providing state-of-the-art equipment and technology will improve student's ability to research, experiment, and discover God's handiwork in creation.

STEM - Sequence I

The northwest wing of the school will boast renovated and newly added spaces that will reflect the needs for the 21st century student. These spaces allow for experimentation, hands-on activities, and design opportunities. They also provide fresh opportunities for students to experience innovative technologies, while laying a foundation for potential career options in the skilled trades.

Counseling Center - Sequence I

Consolidating current classrooms creates an environment and culture of caring for students. Whether they are scheduling classes, researching careers, navigating the complexities of a teenage life, or seeking guidance on post high school education, the increased space and functionality of the counseling center will serve our students well.

Staff Commons - Sequence I

Our staff is central in establishing and maintaining the spiritual, academic, and social culture at Unity. They work together in community, so providing adequate space for collaboration and fellowship allows them to effectively carry out Unity's mission. A growing staff is exciting for our future, and we are dedicated to support their needs.



Multi-Purpose Room - Sequence II

Another exciting area is a new shared multi-purpose space with a large, raised stage area. This stage will replicate stages Unity currently uses for theater performances. Students in musical and/or the play will utilize this space for practice and performances. Our intent is to host Unity's winter play along with the band, choir, and orchestra concerts.

Physical Education - Sequence II

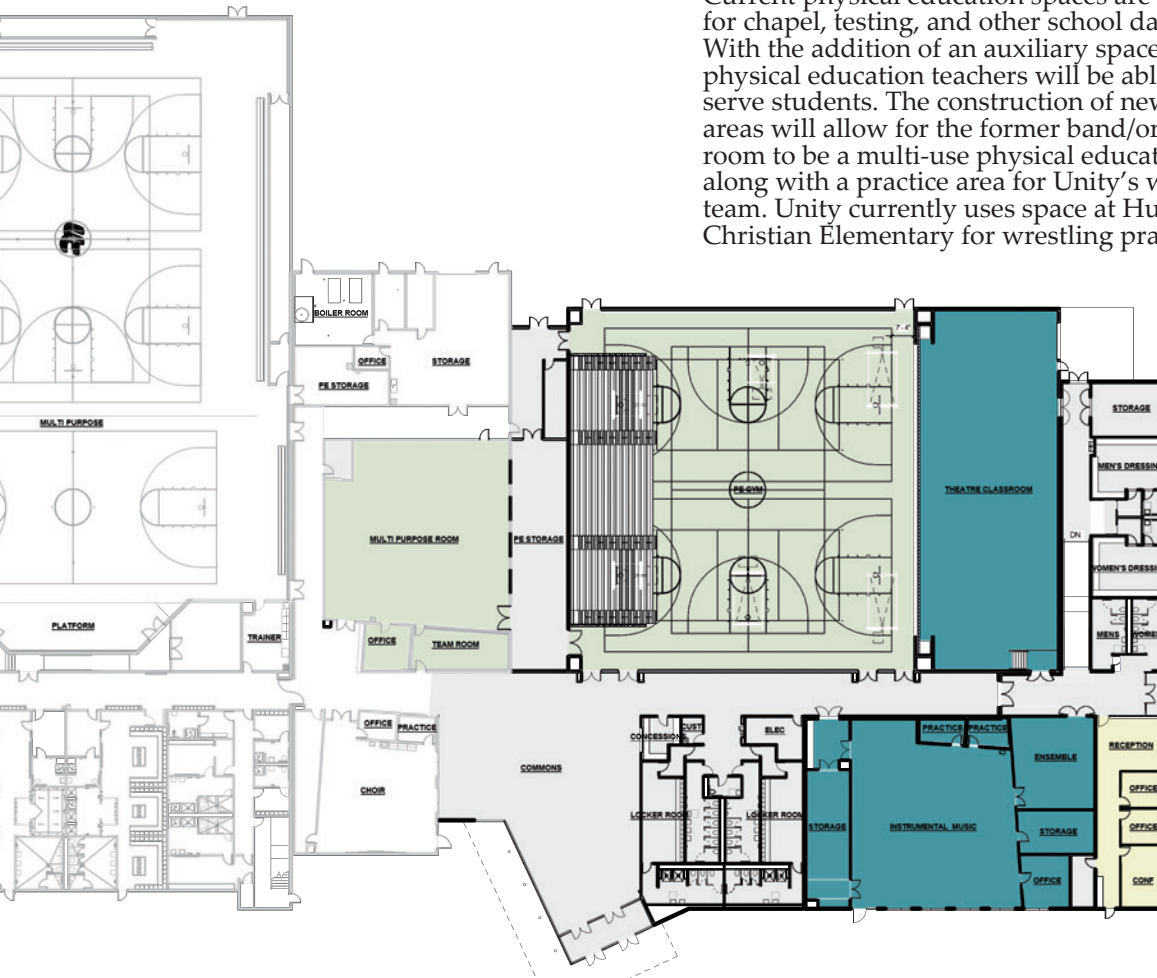
Current physical education spaces are also shared for chapel, testing, and other school day activities. With the addition of an auxiliary space, Unity's physical education teachers will be able to better serve students. The construction of new Fine Arts areas will allow for the former band/orchestra room to be a multi-use physical education space along with a practice area for Unity's wrestling team. Unity currently uses space at Hudsonville Christian Elementary for wrestling practice.

Development Office - Sequence II

Unity is committed to the future of Christian education in this area. Building relationships in the broader community is essential toward the mission of Christian education. Having our Development Office on-site will allow for a closer connection to life on campus, enhance regular communication with staff, and more effectively build bridges between Unity and the community.

Fine Arts - Sequence II

Praising God through instrumental and vocal performance brings honor and glory to Him. Providing adequate space is a key component for growing fine arts programs. A larger, shared music room for our bands and orchestra will foster an environment well-suited to learning while providing much needed areas for storage.



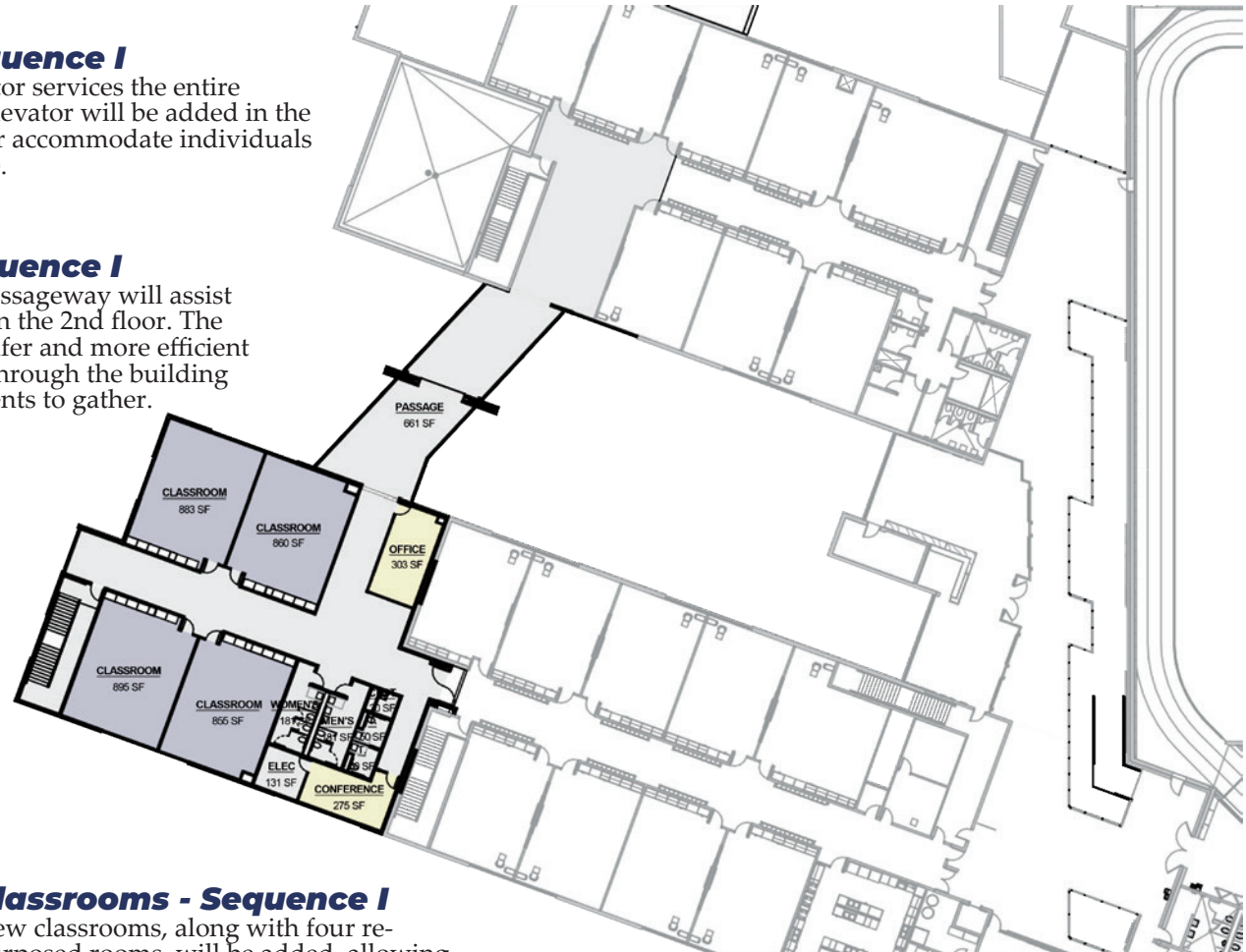
Proposed Second Floor Plan

Elevator - Sequence I

Currently one elevator services the entire campus. A second elevator will be added in the Passageway to better accommodate individuals in need of assistance.

Passageway - Sequence I

A second story enclosed Passageway will assist with the flow of students on the 2nd floor. The Passageway will create a safer and more efficient way for students to move through the building and allow a space for students to gather.



Classrooms - Sequence I

New classrooms, along with four re-purposed rooms, will be added, allowing teachers access to high quality spaces for student instruction.



Interior Gathering Area Rendering



Interior Passageway Elevator Rendering



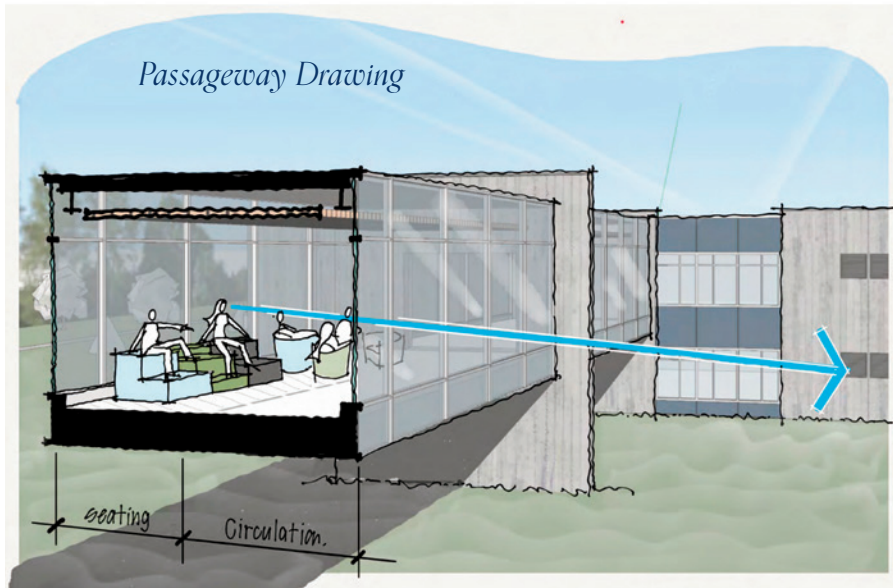
Interior Classroom Rendering



SEQUENCE I

Southwest Wing

Classrooms, Counseling
Center, Staff Room,
Elevator, Passageway





SEQUENCE I

Northwest Wing

STEM Addition



Interior CAD Room Rendering



Exterior STEM Addition Perspective View



Interior Workshop Rendering



Interior Science Room Rendering

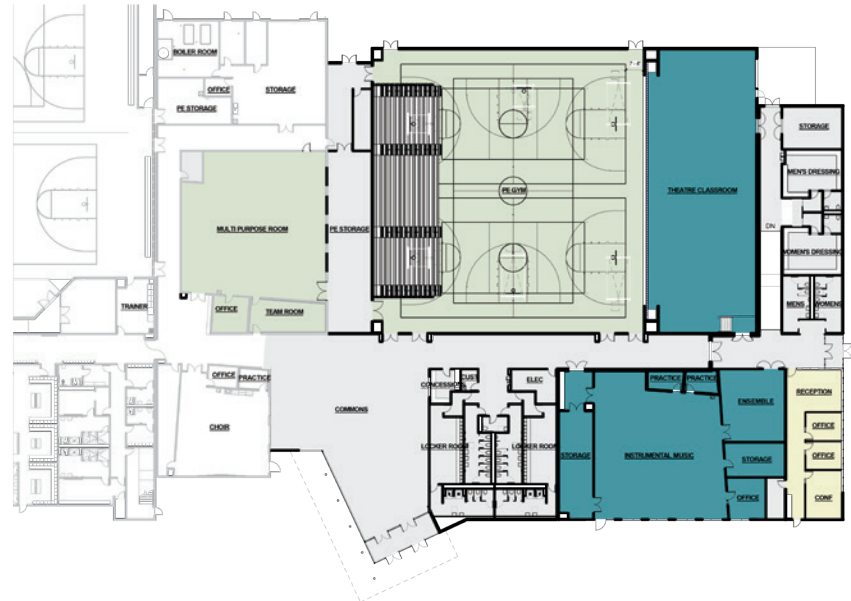


"Our Christian school community has been a community that accomplishes construction projects like these through the involvement of many. Each, along with many donors, are doing what they can. I believe this has been and remains the best way. It creates a community and encourages involvement and engagement. It motivates us to pray. It reminds us that our earthly wealth is not our own, and it draws us together to accomplish something we could not accomplish individually. I know that Unity's annual budget cannot support facility growth and enhancements. If the budget had to, the cost of Christian education would be out of reach for too many. Please consider joining us in whatever way you can. Together we can provide the facilities to accommodate the growth of Unity and provide space to Expand Unity's Mission."

Unity Christian Donor

SEQUENCE II

Fine Arts Classrooms,
Theatre Classroom,
Dressing Rooms, Physical
Education Space, Locker
Rooms, Development
Office.

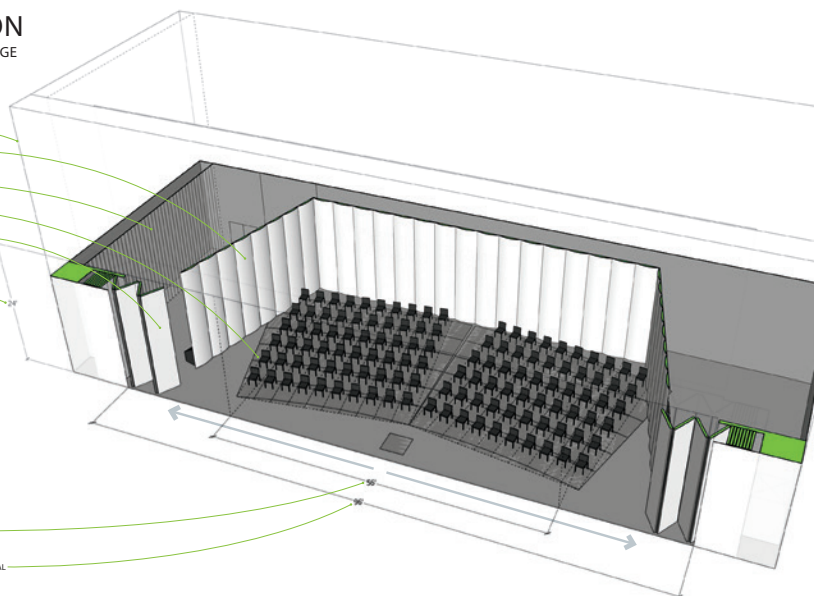




EAST ADDITION THEATRE CLASSROOM / STAGE

MODIFIED FLY LOFT
PORTABLE ORCHESTRA SHELL SYSTEM
RIGGING LINE SET
(2) BANDS/ORCHESTRAS
(60 STUDENTS EACH)
OPERABLE ACOUSTICAL PARTITION -
BI-PARTING / STACKING AT EACH SIDE
PROSCENIUM & OPERABLE
PARTITION HEIGHT

TRADITIONAL PROSCENIUM WIDTH (OPERABLE
ACOUSTICAL PARTITION PARTIALLY OPENED)
FULL PROSCENIUM WIDTH (OPERABLE ACOUSTICAL
PARTITION FULLY OPENED)



*"These commandments
that I give you today
are to be on your hearts.
Impress them on your
children. Talk about
them when you sit at
home and when you
walk along the road,
when you lie down and
when you get up."*

Deuteronomy 6:6-7

SHARE THE LOAD

If you or someone in your family has been impacted by Christian education, and if you believe that Christian high school education is a valuable resource for our eastern Ottawa community, we need your help.

Please prayerfully consider a financial investment to ensure that Christian education at Unity continues for generations to come. Through the financial gifts of many we can share the load, encourage students, families, and the Unity staff. Together

we can accomplish the goal of *Expanding Our Mission* to meet the need of increasing enrollment.

God has been faithful to our Unity Christian community, abundantly blessing us with committed families who have been generous in supporting Christian education. We are seeking partners to join us in *Expanding our Mission*.

We are asking those who support Unity to prayerfully consider providing a gift equal to 1% of their annual income

per year, for the next five years to help reach our goal.

Your participation in this expansion will allow Unity to continue its mission for each student to foster faith, increase knowledge, and develop skills to serve God and others.

Our partner, J. Milito & Associates, Inc. will be calling our Unity Community.

"God has blessed us financially and urges us to invest in the spiritual formation for future generations. We chose Christian education at Unity Christian for our own children because the staff taught and encouraged our children based on biblical truths. As parents, we welcomed the opportunity to receive help in raising our children and could see no better place for them to be for eight hours a day five days a week. I am thankful that I am able to invest and make the same opportunity available and affordable for families for many years. I see no better investment than Christian education!"

Parent of 3 Unity Graduates

**No prayer goes unheard.
No gift is too small.**

**Through the gifts
of many, we can
Share the Load.**

Sequence I Cost:
\$12.7 million

Sequence II Cost:
Final cost and schematic design are still under development. The desire is to present an accurate cost to our community in the fall of 2023.

WAYS TO MAKE your commitment

GIVE NOW:



Give online now at
<https://unitychristian.thankyou4caring.org/building-unity>

or

Please use the enclosed response envelope to mail the Development Office your gift.

MAKE A PLEDGE:

Please use the QR Code below to make a pledge. On the form you will have the following options:

1. Make a pledge to pray for this campaign.
2. Make a pledge to assist us financially with this campaign.
3. Get more information and updates about this campaign mailed to you or sent to your inbox.

